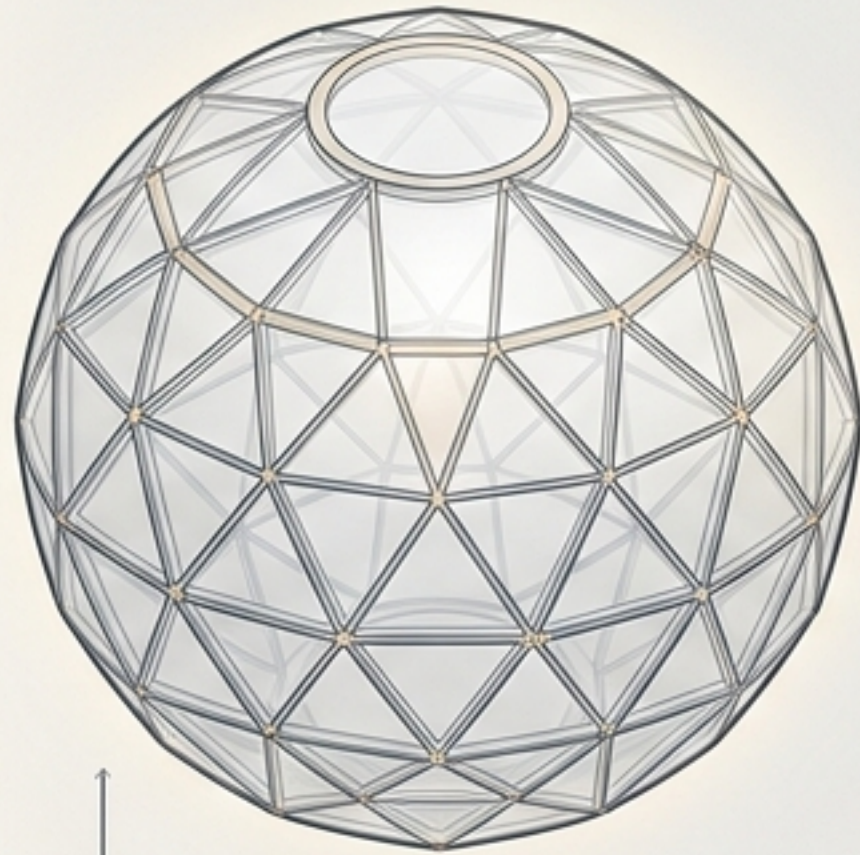


THE URBAN SPHERE

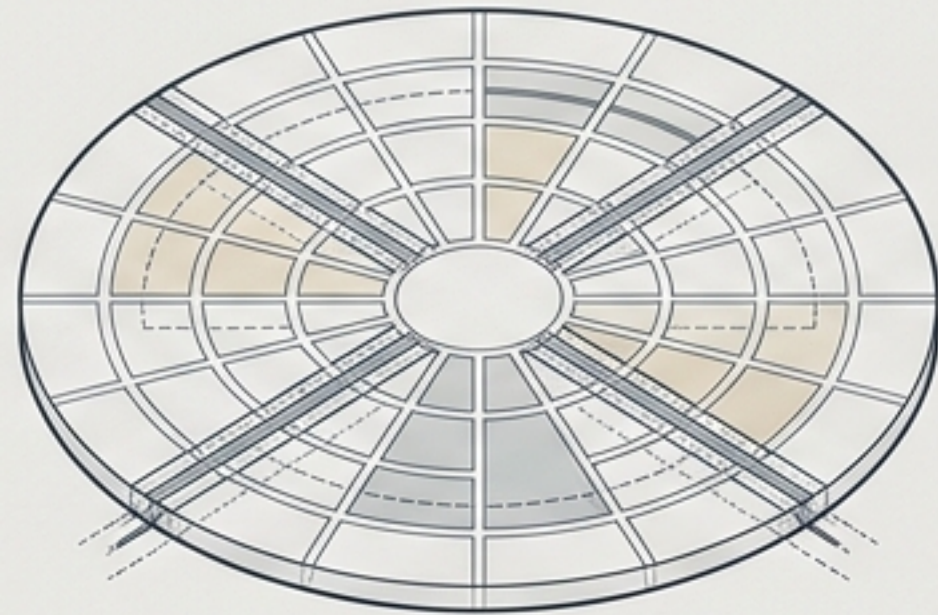
A prototype for radial district living.



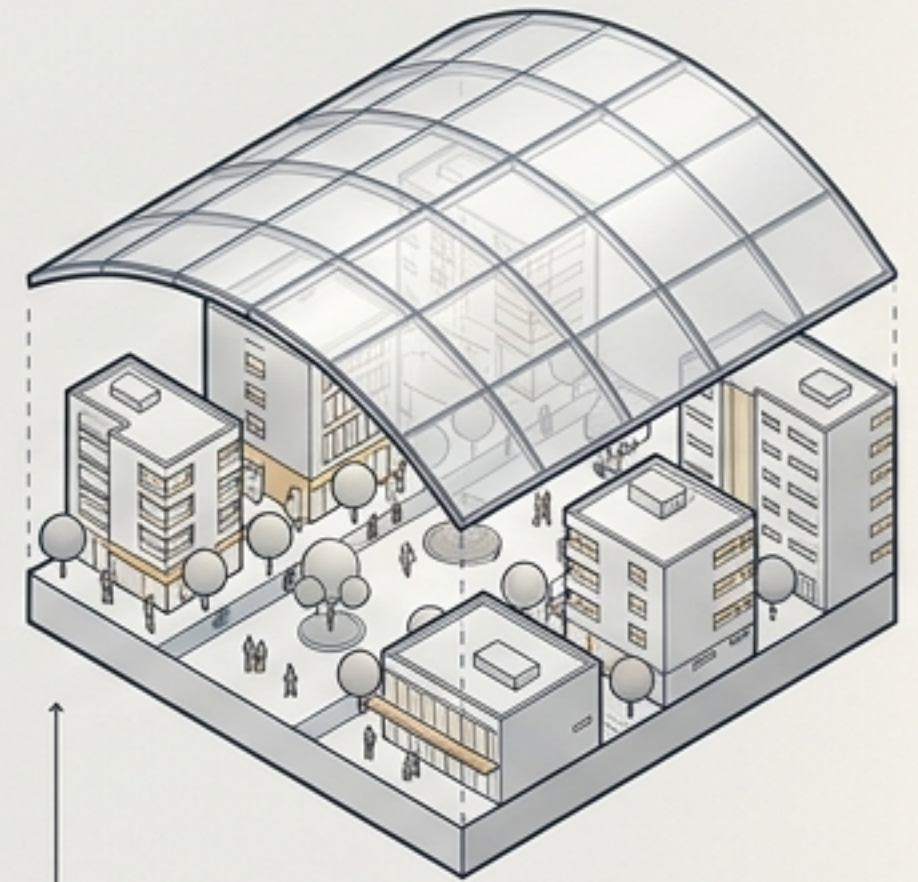
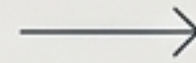
Defining the radial district prototype



A spherical climatic envelope.

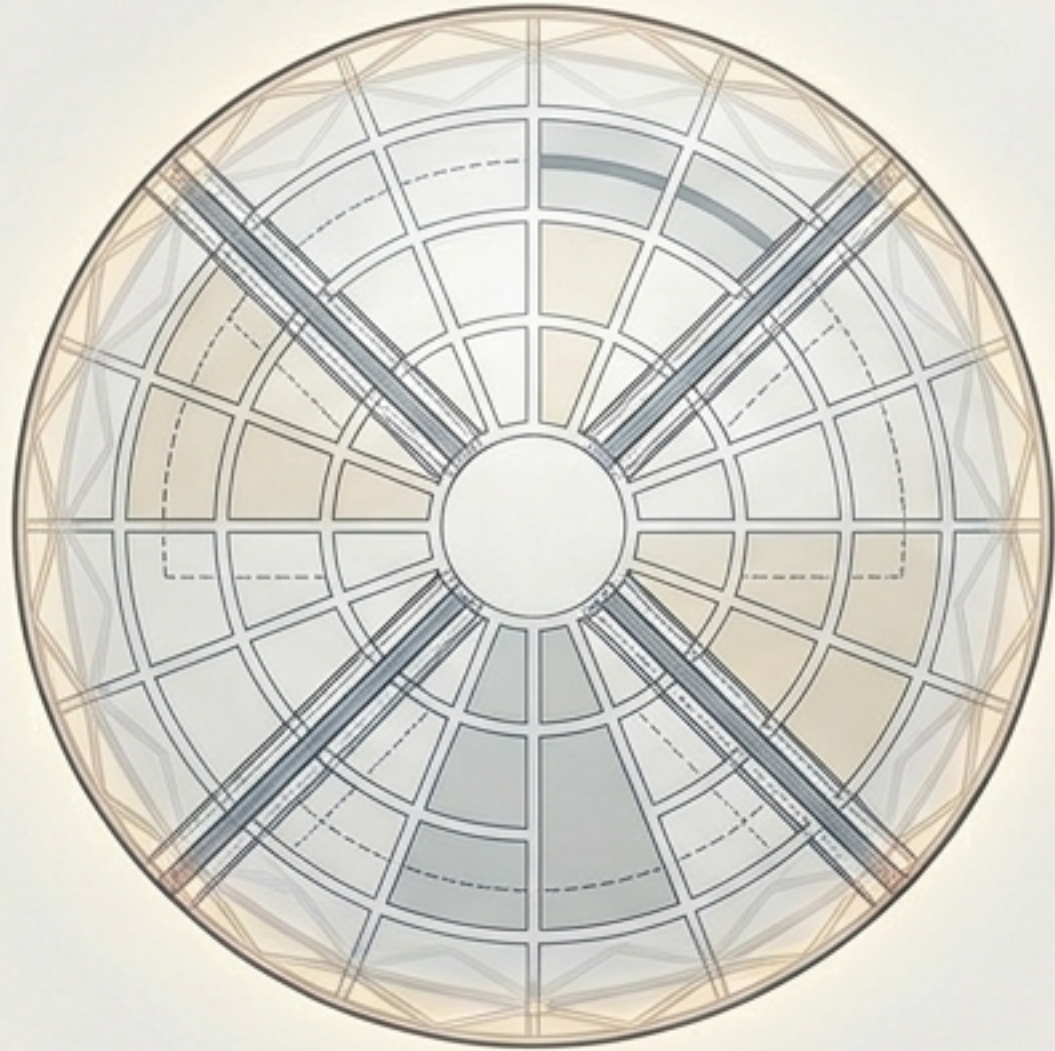


A radial street and park network.



A shared canopy over an active, mixed-use community.

Exterior legibility contrasts with interior experience



Exterior Legibility

- [Functions as a clear organizing field.]
- [Geometric footprint]
- [Radial landscape wedges]
- [Translucent environmental shell]

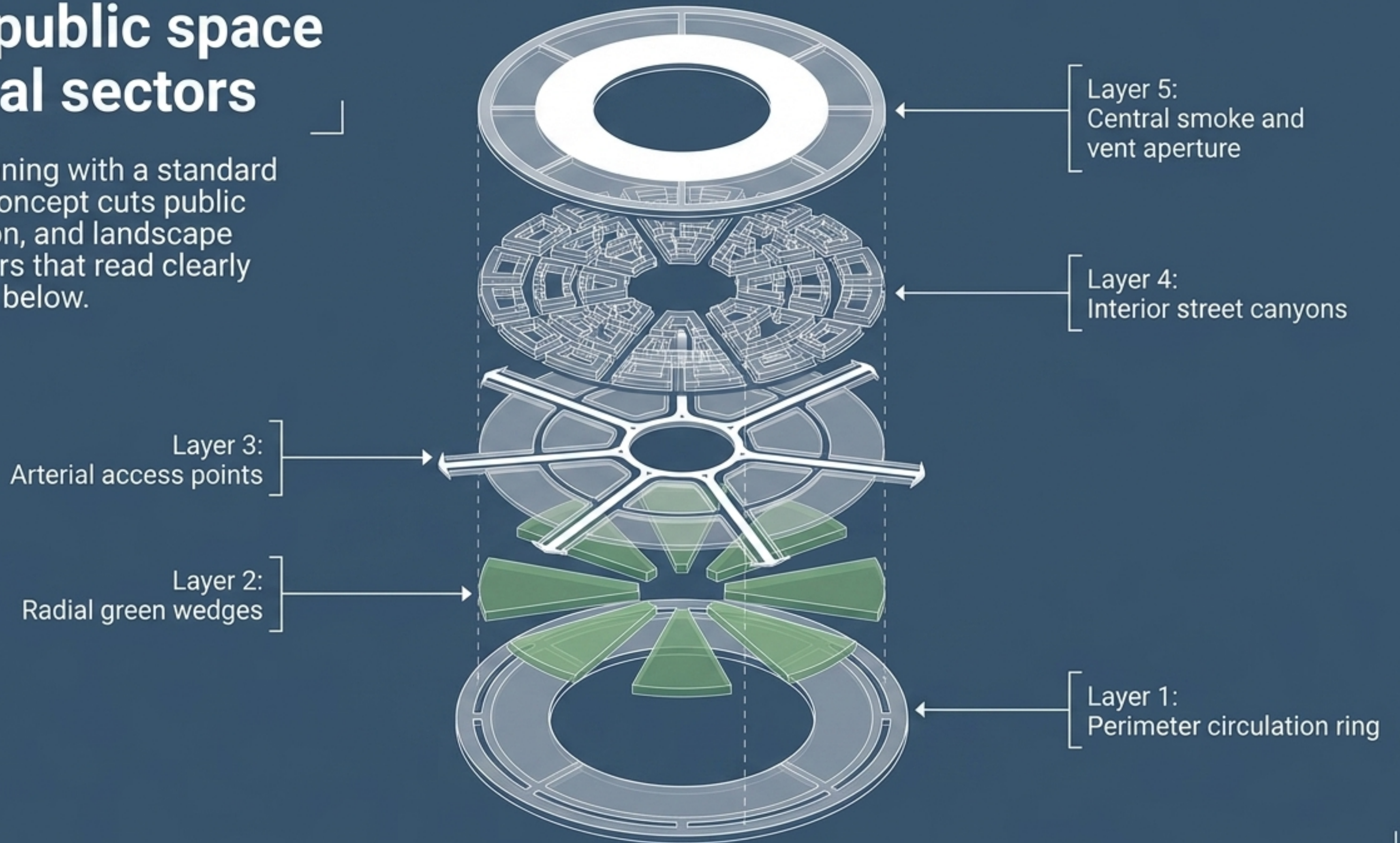


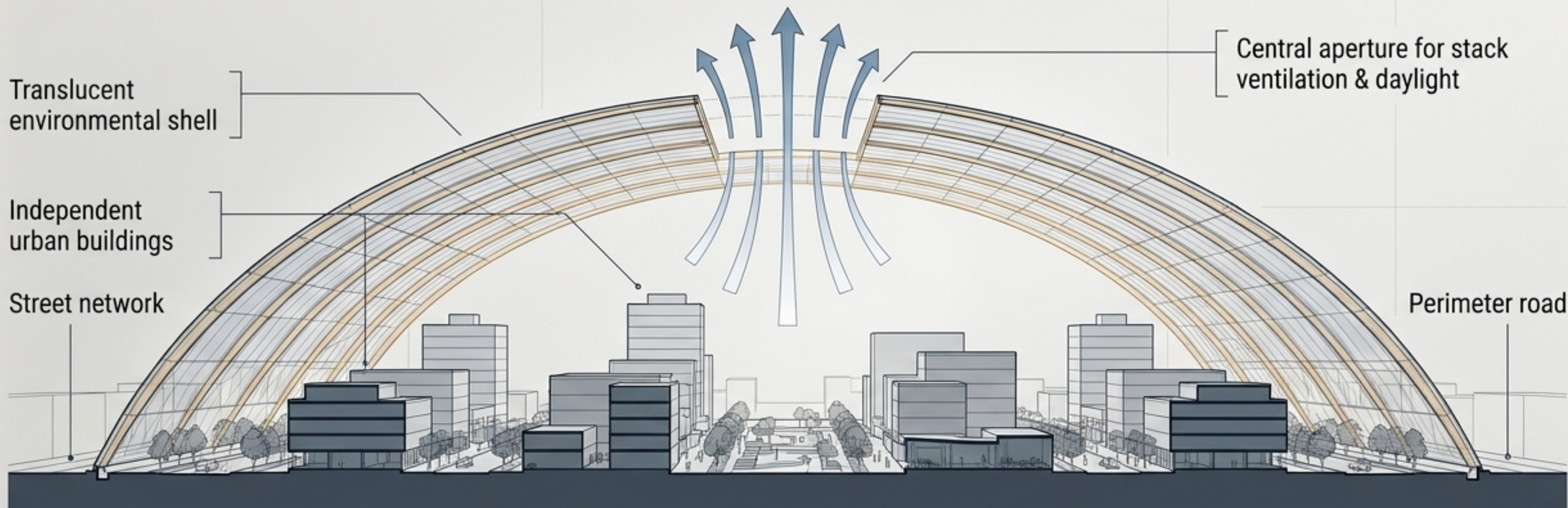
Interior Experience

- [Breaks down into human-scale urbanism.]
- [Street canyons and civic corridors]
- [Tower spacing and tree rows]
- [Dynamic shadow play]

Cutting public space into radial sectors

Instead of beginning with a standard block grid, the concept cuts public space, circulation, and landscape into radial sectors that read clearly from above and below.





Current Plausibility Checklist

- Open central aperture tested for smoke exhaust, stack ventilation, and daylight
- Utilizes clear perimeter roads and internal street networks

Future Feasibility Vectors

- Shell span and structural support
- Seismic movement and fire control
- Stormwater management and heat gain
- Emergency vehicle reach

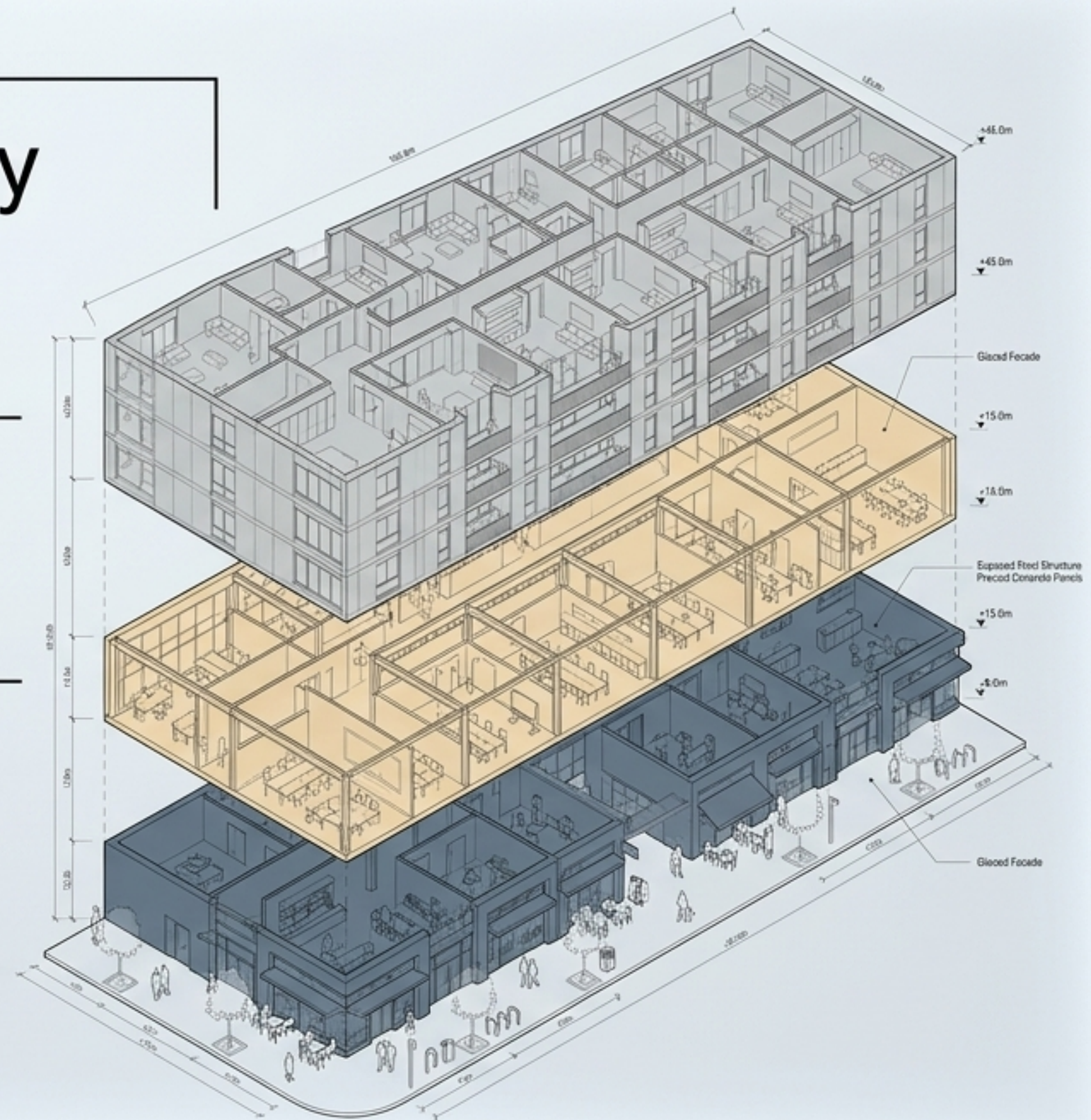
Core Insight: The prototype operates as a lighter environmental canopy sheltering independently code-compliant buildings.

Vertical zoning builds a dedicated service economy

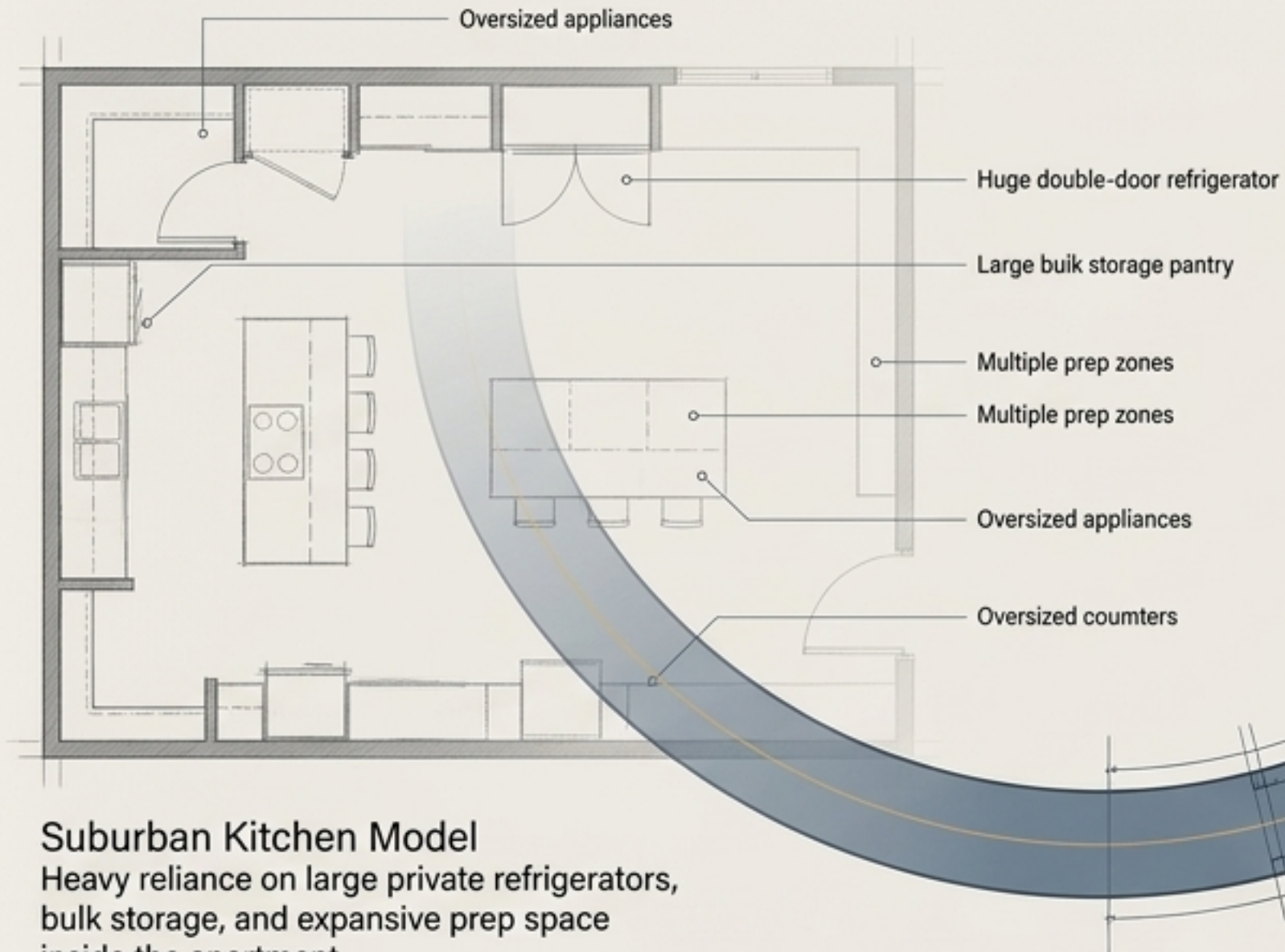
Upper Floors: **Housing**
Primary residential units.

Mid-Levels: **Flex Space**
Professional offices, coworking spaces,
studios, and live-work units.

Ground Level: **Daily Economy**
A dense restaurant-and-services district.
Designed for cafes, bakeries, small grocers,
clinics, daycare, fitness, and daily services—
not leftover retail.

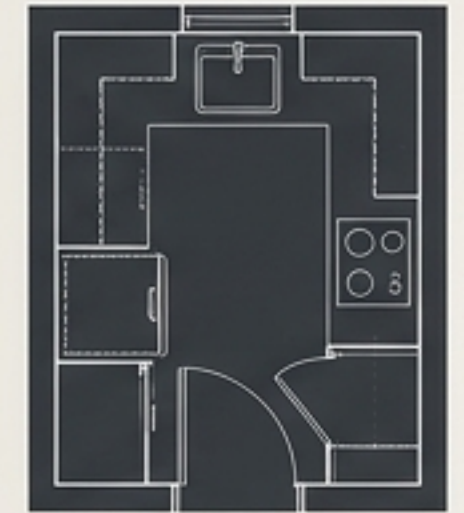


Shifting food capacity to shared infrastructure



Suburban Kitchen Model

Heavy reliance on large private refrigerators, bulk storage, and expansive prep space inside the apartment.

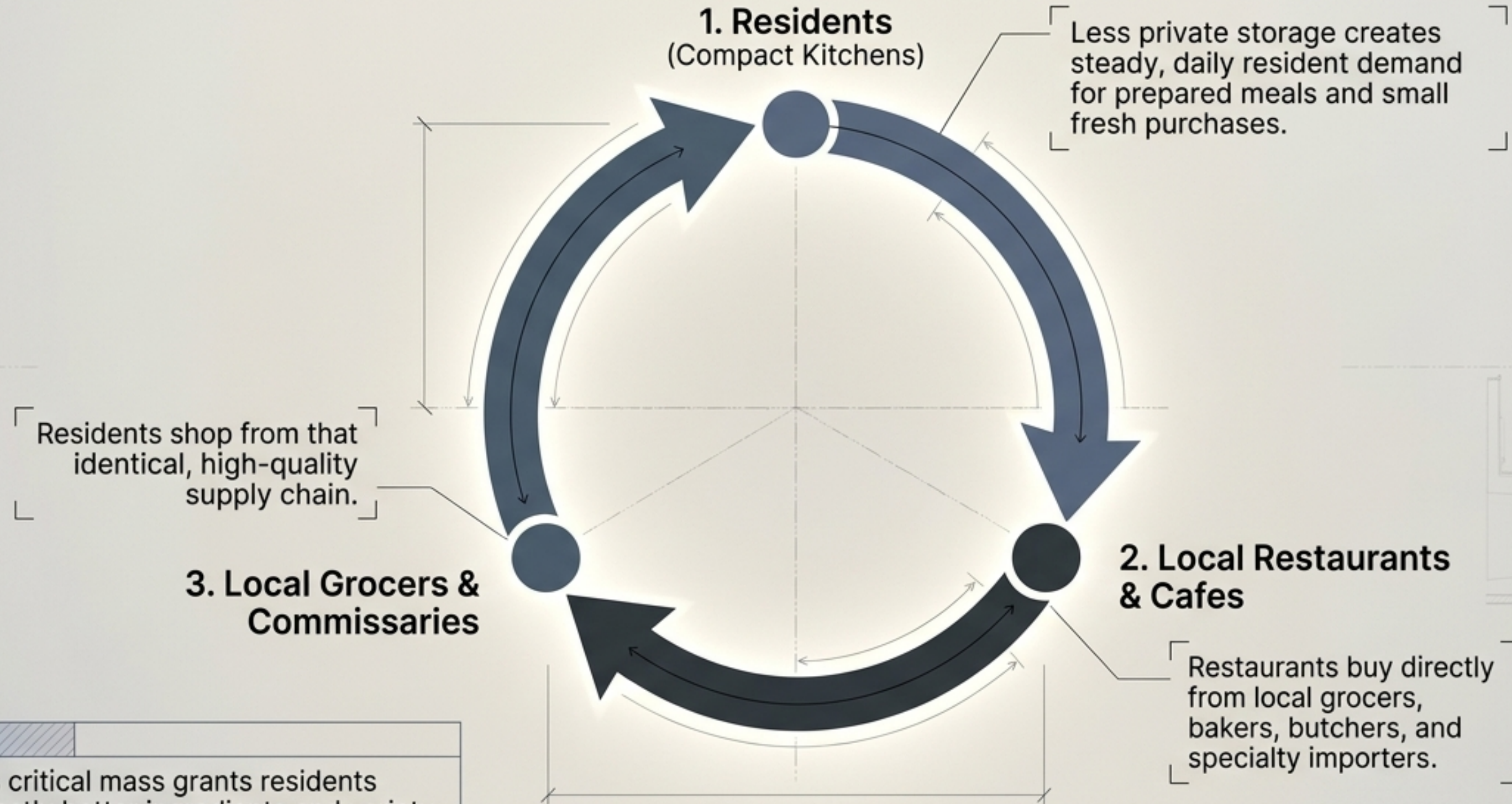


Sphere Compact Model

Equipped with essentials: a sink, induction hob, small fridge, and basic reheating space.

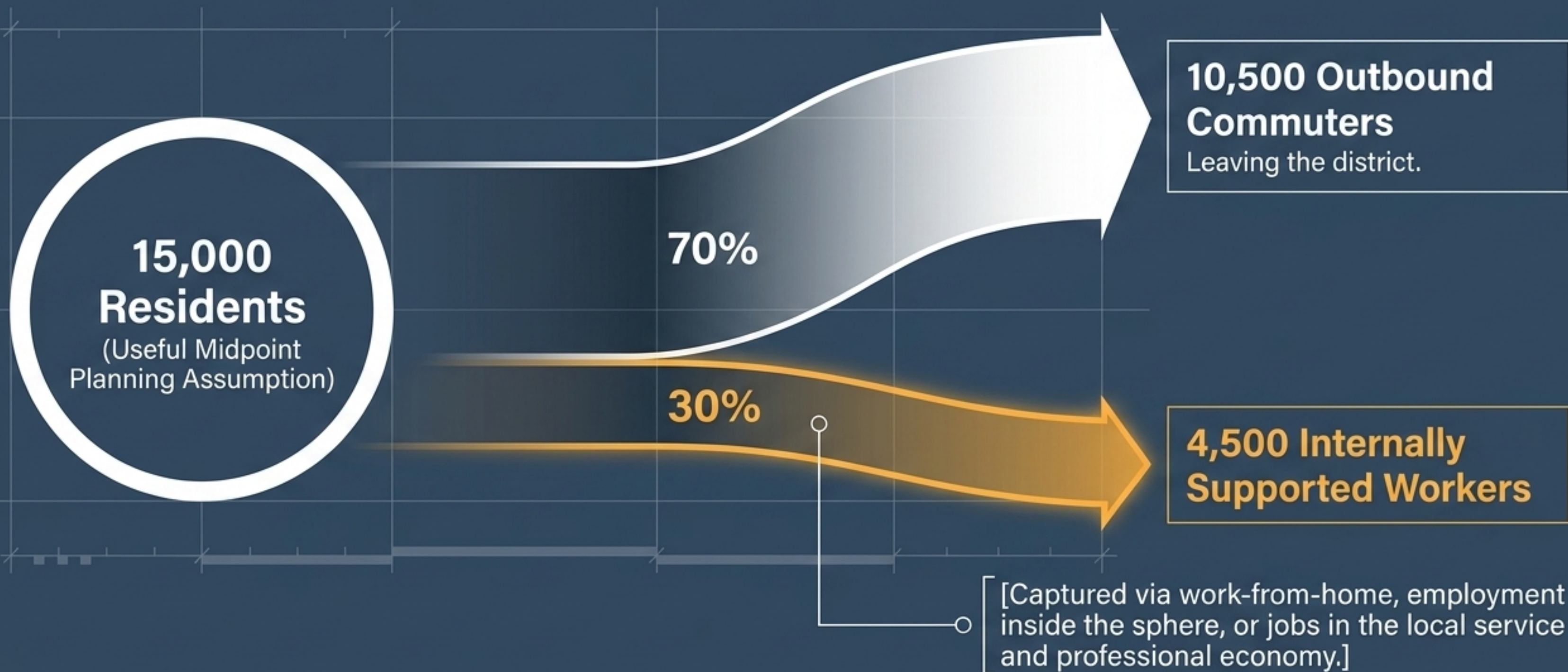
Core Insight: This does not remove food choice. It intentionally shifts storage and prep capacity out of the private apartment and into shared neighborhood infrastructure.

The food economy acts as a continuous flywheel



Result: This critical mass grants residents access to vastly better ingredients and variety than a standard residential grid could support.

Retaining 30 percent local work creates a true daytime neighborhood



Hidden logistics support the public streetscape

Visible streets with many small, outward-facing storefronts (replacing the inward-facing mall model).

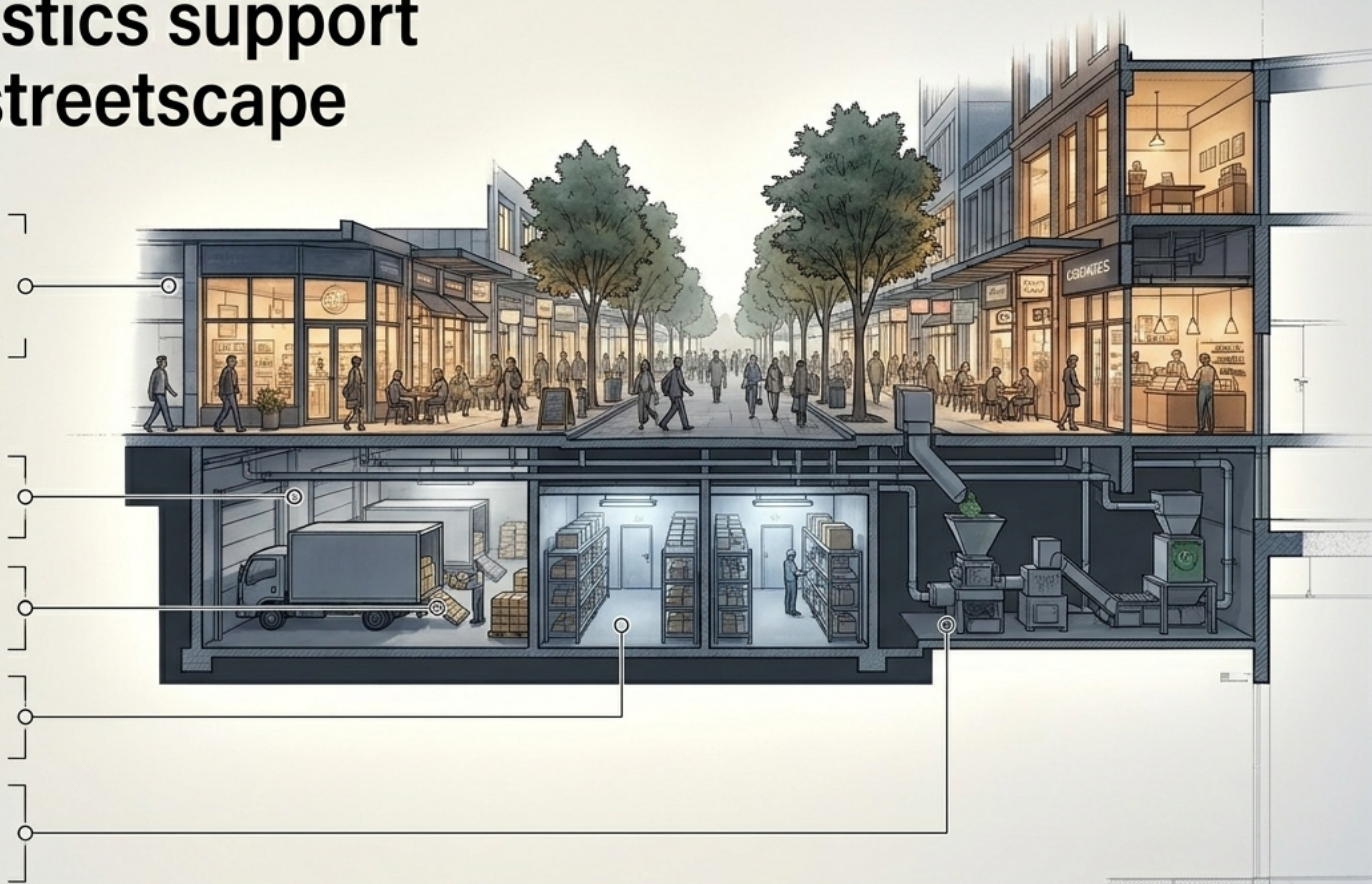
Design Implications

Dedicated zones for frequent daily deliveries.

Shared prep kitchens and cold storage nodes.

Integrated waste and compost loops.

Clear thresholds between public activity and private spaces.

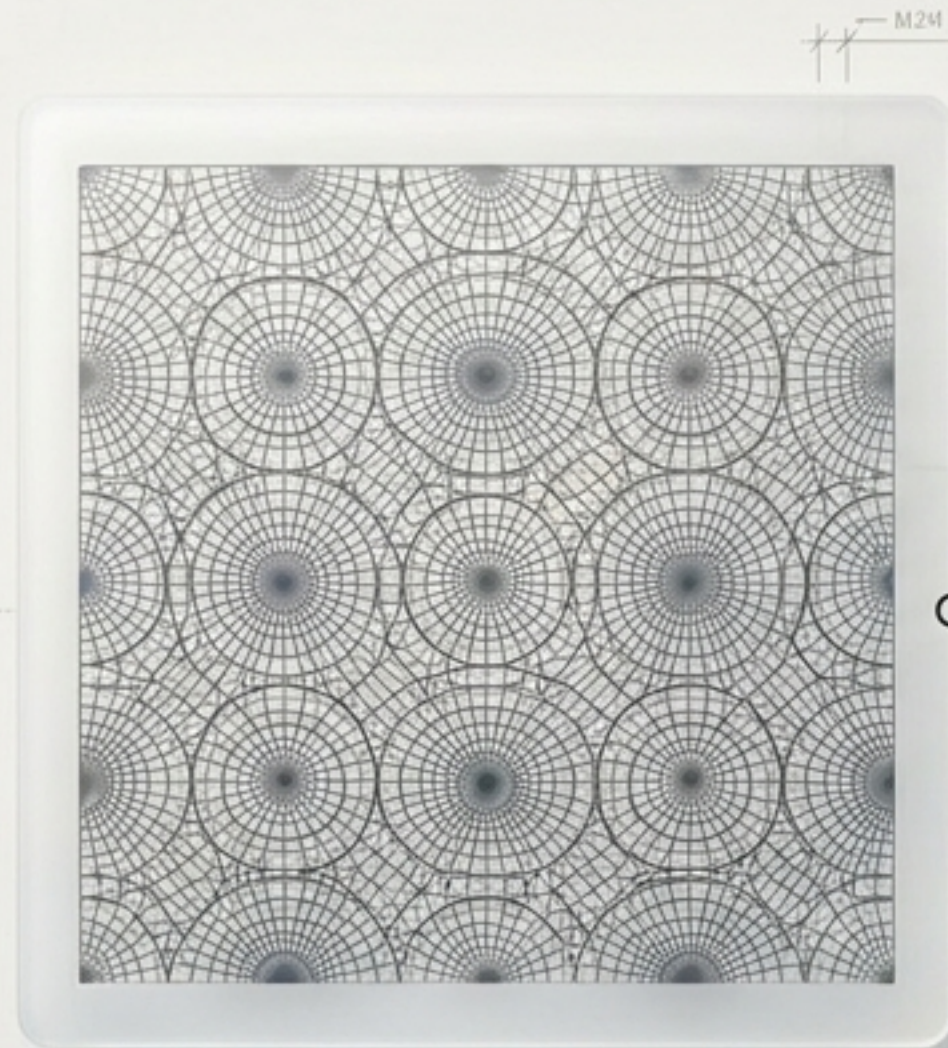


The symbiosis of density and culture

The sphere works when density funds local culture, and local culture makes density livable.

Compact housing modules drive the economic capture required to build a vibrant street-level ecosystem, transforming a geometric prototype into a self-sustaining neighborhood.

Tracing the evolution of sphere-based design



Radial Wave Tessellation

Focus on raw geometric patterns and base layout logic.



The Urban Sphere

Moving the geometric pattern into an inhabitable district prototype with a shared environmental envelope.



RWT Tower Town LA

Applying the internal street networks and radial subdivision to specific, localized planning studies.